

## WELCOME

We are glad you can join us today.

Activities for children to do during the service are provided in the foyer.

A Hearing Loop is installed in the church; please use your T switch.

An offering will be received during the service, to support the ongoing work of the church. Other ways of giving are included on the next page.

If you are visiting with us today, we encourage all who are baptised to receive communion. If you do not wish to receive communion, please still come forward for a blessing.

Please join us in the hall for refreshments after the service.

Worship & Parish events will be automatically cancelled during a code red day.

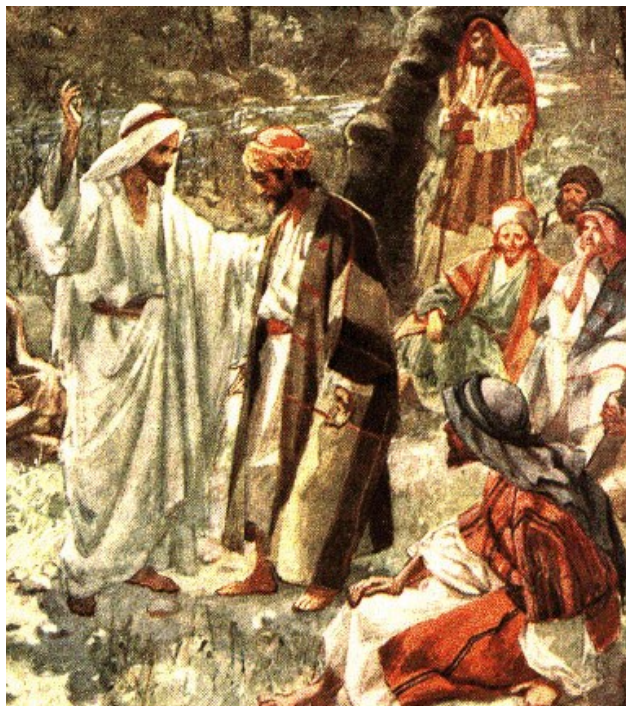
A copy of this weeks sermon will be available on the website.

## PEW SHEET

25th February 2018  
Second Sunday in Lent

## ACKNOWLEDGEMENT

We acknowledge the Wurundjeri people of the Kulin nation who are the traditional custodians of this land on which we meet, and we pay our respects to their elders past and present.



## WHAT'S ON THIS WEEK

Sun 25th	8:00am	Eucharist
	10:00am	Eucharist
Tue 27th	2:00pm	Ladies Fellowship meeting
Wed 28th	9:30am	Meditation
	10:30am	Eucharist
Thu 1st	7:30pm	Taize Service
Fri 2nd	10:00am	World Day of Prayer at St Margaret's
Sat 3rd	8:00am	Meditation
	8:30am	Men's breakfast
Sun 4th	8:00am	Eucharist
	10:00am	Eucharist
	3:00pm	Lenten Labyrinth Walk

## Prayer of the Week

Remember, O Lord,  
what you have wrought in us  
and not what we deserve,  
and, as you have called us to your service,  
make us worthy of our calling;  
through Jesus Christ our Lord. Amen.


## Shrove Tuesday Pancakes.

Some 50 people attended the fund raiser for victims of the October floods in Bangladesh. Nearly \$1200 was raised for Act for Peace. It was pleasing to see representatives of 5 or 6 churches in the Eltham area as well as some parishioners of St Margaret's including 4 or 5 who had been at the pancake throwing event after 10am church the previous Sunday.

Special thanks to Margie Dahl for initiating this event and thanks to Rod and members of the Do Justice Group.

## PARISH OFFICE

Our Parish office is inside Dendy House at the rear of the church. Office hours are 10am—2pm Monday to Friday. Please leave us a message or email us if the office is unattended.

79-81 Pitt St, Eltham, 3095. 9439 9238	parishoffice@stmargaretselftham.org.au
vicar@stmargaretselftham.org.au	communications@stmargaretselftham.org.au
ABN 19 171 109 073	www.stmargaretselftham.org.au 

### CLERGY

#### VICAR

The Reverend Keren Terpstra  
9439 9238 and 0438 220 878  
vicar@stmargaretselftham.org.au  
Day off Tuesday

#### HONORARY ASSOCIATE CLERGY

The Reverend Robert Street  
9439 9238 and 0423 514 570

#### HONORARY ASSISTANT CURATE

The Reverend Kirsten Winkett

The clergy are available for emergencies at all hours.

### PARISH COUNCIL

The Parish Council meets once a month and these dates are published in the calendar.

Your councillors are: Mandy Stevens; Sandra Brown-Holt, Harry Watson and John Humann.

If you have anything to raise at Parish Council, either contact a councillor or fill in the feedback form in the foyer and place it in the box. If you are hoping to host an event, complete an Event Planning Sheet from the office first to speed up the process.

Parish Matters is a newsletter produced regularly, and copies are maintained on the website. Please contact Harry Watson or Sally Petty if you have a contribution to make.

### GIVING

St Margaret's encourages the exercise of our discipleship by generous giving to God's work and mission here. If you don't want to contribute through the open plate, there are direct debit forms in the foyer to be able to give anonymously through the Anglican Development Fund. If you wish to make a bequest, there is information in the foyer on how to do so.

### PASTORAL CARE

The pastoral care team members are available to provide a telephone call or visit people in need in their home, hospital, rehabilitation, aged or palliative care facility. These contacts seek to enable people to share their needs and concerns in order to discern appropriate channels for them to receive spiritual, emotional and/or practical support as desired. A member of the Pastoral Care team may be contacted at any time (24/7) on **0455 610 692**.

### WARDENS

Our Church Wardens are:

Kathleen Toal 0439 032 977

Shirley Nash 0403 601 713

David Tuke 0408 017 962

### COMMUNICATIONS

If you have any information you would like to share with the Parish, contact the office for assistance. Consider asking to use the pew sheet; the website; social media; group text messages; or advertising material.

Please submit all material for the pew sheet no later than 11am on the preceding Wednesday.

### KEY PARISH CONTACTS

Do Justice Group:	Jenny Disney
Faith Formation Network:	Annette Street
Property & Maintenance:	Graham Constantine
Pastoral Care Team:	Adrienne Watson
Discovering Spirituality:	Shirley Nash
Finance Committee:	John Humann
Communications Committee	Mary Lynton-Moll

### WORSHIP SERVICES

**Sunday 8am:** Reflective service of Holy Communion followed by morning tea.

**Sunday 10am:** Family service of Holy Communion with music, children's activities, morning tea

**Wednesday 10:30am:** Holy Communion, morning tea. Meditation prior to this service.

**Saturday 5pm:** Short evening prayer service to prepare for worship the next day.

**Monday, Thursday & Friday 8:30am:** Morning Prayer

## WORSHIP

### SENTENCE OF THE DAY

If you want to become a disciple of Jesus, deny yourself, take up your cross, and follow him. *Mark 8.34*

### PRAYER OF THE DAY

God of all times and places,  
in Jesus Christ, who was lifted up on the cross,  
you opened for us the path to eternal life:  
grant that we,  
being born again of water and the Spirit,  
may joyfully serve you in newness of life  
and faithfully walk in your holy ways;  
through Jesus Christ our Lord,  
who lives and reigns with you in the unity of the Holy Spirit,  
one God, now and for ever. **Amen.**

### TODAY'S HYMNS

**Introit:** As pants the hart for cooling streams - TiS25  
**Gradual:** Be still for the presence of the Lord - SCE(1)47  
**Offering:** The power of your love - TiS685  
**Mission:** May this Lenten Discipline - TiS463 (8am)

### TODAY'S PSALM

Psalm 22: 24-32

### TODAY'S GOSPEL

Mark 8: 31-38



## ABM PEW REFLECTIONS

**Sunday 25th February 2018**

### Second Sunday in Lent

'Let all the ends of the earth remember and turn to the Lord: and let all the families of the nations worship before him.' This week, as Lent continues, remember to turn towards God. Invite family members to come to church with you.

- Pray that people around Australia will see God's love in their lives and be converted by it.
- Pray for the Church of the Province of South East Asia, giving thanks for the work they do to further God's mission in the world.



**ANGLICAN BOARD OF MISSION**  
*Working for Love, Hope & Justice*

### Prayer Chain

For urgent prayer requests

Glenys Collis

**0407 398 948**

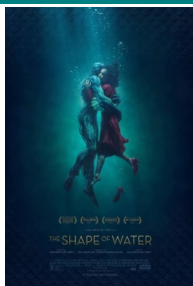
## NOTICES

### Film, Friends, Food and Faith

This month we will see *The Shape of Water* at the Nova Cinema followed by a light meal and conversation. The film starts at 3.50 so we will meet at 2.55 at the car park behind Lower Plenty shops. All welcome.

Shirley Nash 0403 601 713

Set in Baltimore in 1962, the plot follows a mute custodian at a high-security government laboratory who falls in love with a captured humanoid-amphibian creature. At the 90th Academy Awards the film received a leading 13 nominations.



### Piece of Peace

The first Piece of Peace will be on **Wednesday 26th February 2018**. It will be a special event.

#### A Q and A with Rev'd Keren Terpstra.

We are all looking forward to learning about her faith journey. Everybody is warmly welcomed. So get your thinking caps on and source some questions for Keren. Any enquiries please call Jennifer Constantine, Margaret Charles or Betty Cooper.

### Thank You

To all those who contributed to the UNHCR Fund for Rohingya refugees. \$1,000 cash plus enveloped donations was given! Fay.



### PALM SUNDAY

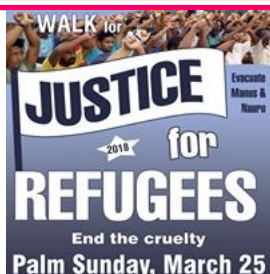
Mid March we will be looking for palm fronds to make palm crosses. Please let the office know if you can source any. Many thanks.

### We're going to the Palm

### Sunday Peace March

Will you come too?

Do Justice Group.



### Palm Cross Making

**Saturday 17th March**

**at 10:30am**



**PALM SUNDAY**

In preparation for Palm Sunday on 25th March.

<b>ROSTER</b>	<b>25th February 8:00am Lent II</b>	<b>25th February 10:00am Lent II</b>	<b>4th March 8:00am Lent III</b>	<b>4th March 10:00am Lent III</b>
<b>Celebrant</b>	Keren Terpstra	Keren Terpstra	Keren Terpstra	Keren Terpstra
<b>Preacher</b>	Keren Terpstra	Keren Terpstra	Keren Terpstra	Keren Terpstra
<b>Sacristan Assistant</b>	Robert Brazenor	Jean Ranson	Sally Petty	Geoff & Elizabeth Milgate
<b>Liturgical Assistant</b>	Robert Brazenor	Roger Alcock	Sally Petty	Adrienne Watson
<b>Communion Assistants</b>	Catherine Pearson Graham Carew	Angela Langan David Pryor	Mandy Stevens Chris Winkett	Mark Laidlay Adrienne Watson
<b>Greeters &amp; Sides People</b>	Jo Norman Margaret Charles	Kevin Gillett Diana Warrell	Catherine Pearson Vacant	Harry Watson Roger Alcock
<b>First Reading</b>	Genesis 17: 1-7, 15-16  Catherine Pearson	Genesis 17: 1-7, 15-16  Harry Watson	Exodus 20: 1-17  John Winkett	Exodus 20: 1-17  Geoff & Elizabeth Milgate
<b>Second Reading</b>	Romans 4: 13-25 Michael Tucker	Romans 4: 13-25 Melissa Quintarelli	1 Corinthians 1: 18-25 Clive Noble	1 Corinthians 1: 18-25 Josephine Ball
<b>Intercessor</b>	Michael Tucker	Robert Street	Catherine Pearson	Geoff Sandy
<b>Flowers</b>	N/A		N/A	
<b>Morning Tea</b>	Michael & Val Tucker	Lyn	Fay Gravenell & friends	Jean & Margaret
<b>Banking</b>	Chris Warrell	Kevin Gillett	Melissa Laidlay	Vacant
<b>Powerpoint</b>	Felicity Wiltshire	Mandy Stevens	Felicity Wiltshire	Sandra Brown-Holt

## WHAT'S COMING UP

Sat 3rd March	8:30am	Men's breakfast
Sun 4th March	2:30pm	Lenten Labyrinth Walk
Thu 8th March	7:30pm	Taize Service
Sat 10th March	12:00pm	Parish Education Afternoon
Sat 17th March	10:00am	Do Justice Meeting
Sun 18th March	3:00pm	Lenten Labyrinth Walk
Wed 28th March	9:30 10:30am 12:00pm	Meditation Eucharist Piece of Peace

<b>Wednesday Roster</b>			
<b>Date</b>	<b>Greeting</b>	<b>Reading</b>	<b>Morning Tea</b>
28/2/18	Margaret A & Margaret C	Jeremiah 18: 18-20 Betty Cooper <b>Psalm 31: 1-5</b>	Fay Gravenell & Jennifer Constantine
7/3/18	Jenny Disney	Deuteronomy 4: 1 (2-3) 4-9 Rae Kerr <b>Psalm 147: 12-20</b>	Margaret C & Margaret A
14/3/18	Jennifer Constantine	Isaiah 49: 8-15 Gwen Sharp	Vacant

## St Margaret's Hall Bookings

If you wish to hire the hall for either a parish or private function, please go to St Margaret's website, click on Facilities Hire at the top, then Hall. Click on **FACILITIES -HIRE-2018** at the bottom of the page to download the booking form.

Please complete the form and email to:

[communications@stmargaretseltham.org.au](mailto:communications@stmargaretseltham.org.au)

Thank you. There have been a number of clashes lately and this will assist effective communication.

## Garage and Goodies

We will probably run one of these towards the end of the year following Parish Council approval.

Please put aside any items you think may sell. If you cannot store please ring Parish Office.

Thank you.



## The Boite - Alwan

Friday 2nd March at 8:00pm

St Margaret's Hall

Yuval Ashkar, Phil Carroll and Matt Stonehouse play a repertoire that journeys through the diverse styles of Middle Eastern, Turkish and Armenian music. Yuval's oud, Phil's range of flutes and Matt's understated percussion make for sublime listening.



## Call for interest in Children's and Family Ministry

St Margaret's is committed to growing the faith of children and young people in our church. Parish Council is continuing to look for ways we might make this happen and we would welcome help from anyone who has skills and gifts that can support this mission and would like to be involved. Whilst we don't have clear strategies fully formed yet, we do have a range of ideas to begin working on.

Please speak to either Harry Watson or Mandy Stevens if you would be happy to offer assistance in the area of children and youth ministry. Your contribution could be big or small – we welcome any assistance.

Thank you.



## Parish Fire Policy: Code Red Days

If a code red day is declared (this is the most extreme rating) then please note that all services and/or parish activities will be cancelled on that day. This policy will apply both on weekends and during the week. For other fire danger ratings, it is important that everyone follows their own fire plan. Your own fire plan must always take precedence even if you are on a rostered duty. **Make sure you have a fire plan and review it regularly.**

