

For distribution:

Imagine - December 2015
 Partners—Spring 2015
 Ignite—Winter 2015
 Parish Matters—Latest Edition
 TMA—February 2016

For browsing onsite:

Sower—Summer 2015
 Anglican Overseas Aid—Winter 2015
 Benetas—Summer 2016
 Spark Lit.org Prayer Diary—2015

Keeping in Touch:

Book-Keeper Wanted – With increasing workload we need to engage a book-keeper. Are you or do you know anyone interested in this position. Please talk to Wardens. Thank you.

Mary & Chris Lynton-Moll would like to thank everyone who came to Leo's baptism on 31st. and helped to make it such a joyous occasion. Special thanks to Clem and to those who helped with the morning tea



Locum Vicar: The Revd. Dr. Ruwan Palapathwala
 Assistant Priest: The Revd. Clemence Taplin
 Honorary Associate Priest: The Revd. Robert Street

14 February 2016
 First Sunday in Lent and "Back to School Sunday"
 Please join us for refreshments after the services with pancakes after the 9:30am service

**HEARING AID
 INDUCTION LOOP AREA
 USE 'T' SWITCH**

Meditation Group -every Saturday, 8am and every Wednesday, 9:30am. All Welcome.

February/March 2016	
Sun 14 Feb	9:30am Back to School Sunday
Wed 17 Feb	Lenten Studies Begin
Tues 23 Feb	Parish Ladies Fellowship
Wed 24 Feb	Piece of Peace Day
Sat 5 March	Men's Breakfast
11-14 March	Anglican Family Camp and Conference at Philip Island

Parish Directory

Locum Vicar: Revd. Dr. Ruwan Palapathwala
 9439 9238 (not Monday) Mob 0458 113 099
 Email: vicar@stmargaretseltham.org.au

Assistant Priest: Revd. Clemence Taplin
 9439 9238 Tues, Wed, Thurs or Sunday
 Mob 0407 886 799. Home 9888 3328
 Email: assistprst@stmargaretseltham.org.au

Honorary Associate Priest:
Revd. Robert Street
 9439 9238
 Email: parishoffice@stmargaretseltham.org.au

All Clergy are available for emergencies all hours

Parish Office
 79-81 Pitt St, ELTHAM, 3095.
 Tel: (03) 9439 9238 Located in Dendy House (rear of Church). **Open 10am-2pm Tues, Wed, Fri and 9:30am-12:30pm Mon and Thurs.** Phone messages can be left when the office is unattended.

Wardens

Sally Petty 9439 2116
 John Winkett 9439 1793
 Robin Wembridge 9437 1680

Prayer Chain

Glenys Collis 9457 5724

Pastoral Visiting Contact

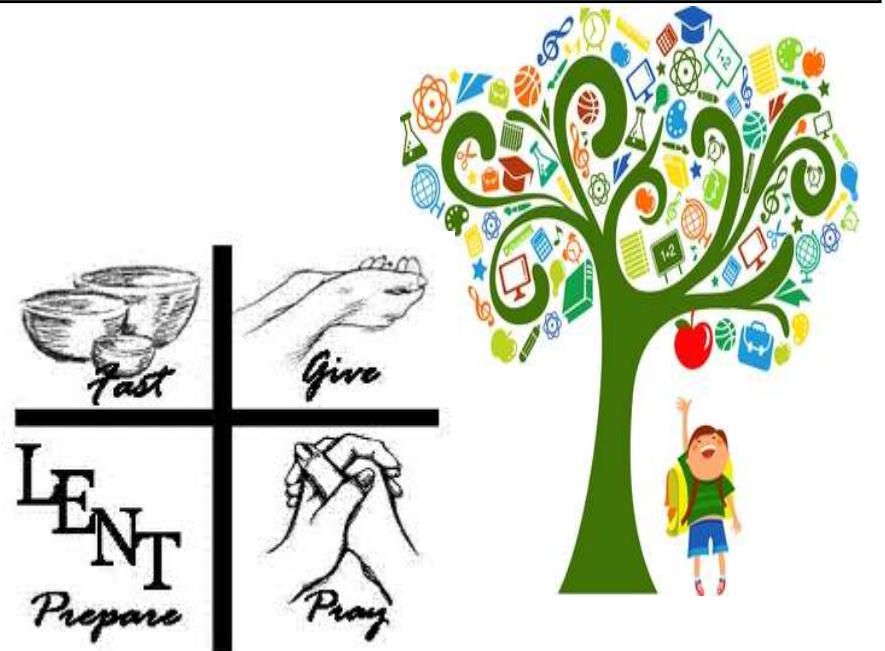
Adrienne Watson 9439 9059

Extended Home Communion

Rev Robert Street 9439 9238

Email Addresses:
 parishoffice@stmargaretseltham.org.au
 communications@stmargaretseltham.org.au
Web Site: stmargaretseltham.org.au
 www.facebook.com/stmargaretseltham

Please submit ALL materials for the weekly bulletin or for printing to the Parish Office, NO LATER THAN 11AM WEDNESDAY (items for the bulletin will only go in if there is space available). If you need to contact the office or visit on a Friday afternoon, please do so before 1pm as it is normally unattended from 1pm to finalize setting up the church for the weekend.



Prayer of the day

Hear us, Jesus Christ,
 when we ask for help to recognise temptation,
 for honesty to face it,
 for strength to resist it
 and humility to give God the glory.
 Hear this prayer for your love's sake.
Amen.

We gather every Sunday at 8:00am and 10:00am and Wednesdays at 10:30am for worship

Today's Service Details

Readings for this week

Deuteronomy 26:1-11 G Collis N/A
 Psalm 91:1-2, 9-16
 Romans 10:4-13 M Tucker H Langan
 Luke 11:29-32

Intercessor G /C Carew S Brown-Holt



Today is coincidentally the First Sunday of Lent – the remembrance of Jesus going into the wilderness for 40 days – and Valentine's Day – where couples all over the Western world celebrate romantic love by being together and exchanging gifts. Out of love for his people Jesus ventures into the desert to fast and to pray – alone, and in this he is confronted with all the desires and difficulties that his human nature throws to him. In this he prevails because of his righteousness and shows us that there is no real love without sacrifice. We ought to remember this message on our Lenten journey and especially today.

Pray that we might have the strength to be able to follow the example of Jesus in sacrificing for those whom we love.

PRAYER TAPERS

You are invited to light candles for prayer **before & after** the service & **during the peace**

BEQUEST

Have you considered supporting the Parish in your will? See brochure about how to make a bequest.

Next Week's Rosters - 21 February 2016 Second Sunday in Lent

3rd w/end of month	8am	10am
Celebrant Preacher	Clem Taplin Chris Winkett	Ruwan Palapathwala Chris Winkett
Sacristan Assistant	Jean Taylor	Diana Warrell
Greeters & Sides people	John Winkett Margaret Alexander	Geoff & Elizabeth Milgate
Liturgical Assistant	John Winkett	Roger Alcock
Children's Time		Annette Street
Readings:		
Genesis 15.1-12, 17-18	Fay Gravenall	David Pryor
Psalm 27		
Philippians 3.17 - 4.1	Coralie Carew	Lyn Clements
Luke 13.1-9		
Intercessor	Gwen Sharp	Geoff Sandy
Communion Assistants	Coralie Carew Neil Andrewartha	Tony Michaelson Jan Kerr
Refreshments	Gwen Sharp Carews	Jan Kerr
Banking Assistant Counter	Jo Norman	Vacant
Flowers	Lent	
PowerPoint		Sandra Brown-Holt

Text: The Rev Will Johnston,
 Assistant Curate
 St Peter's, East Maitland,
 Diocese of Newcastle
 © Anglican Board of Mission, 2016

Please Remember:

If you are the last one out of the hall or church please remember to turn off all heaters, lights and lock the doors. Please do not alter any of the controls on the audio visual system.

This also includes the office. If you need to use the office please turn off all lights, the printer, computers, heaters and close the blinds when you leave.

This week:

The nametag board was left in front of the Fire Reel Door. Please remember not to block this area.

The Audio equipment was left on. The box was found to be very hot on Wednesday morning.

Farewell to Clem

We will be farewelling Clem at a combined service on Sunday 10 April at 9:30am. Following the service will be a special morning tea. All Welcome.

Marked envelopes are in the foyer for anyone who would like to contribute to a gift for Clem.

Palm crosses -Shall we make our own Palm Crosses this year. They aren't hard to make. Maybe on a Wednesday. Please let the office know if you, know where we can get palm fronds, know how to make, willing to help. Sally

Thanks from LinC—Thanks to the people who donated so generously, who set up for the Christmas hamper packers, those who packed and those who delivered. The drivers all came for St. Margaret's! We made 22 bumper hampers. Thank you as this is a special way we can spread the spirit of Christmas in our community.

Intercessors Roster -We need more Intercessors. Please consider offering your ministry which is so important to our worship. Information and assistance provided. Please contact Geoff Sandy 94598640 or geoff@sandy.com.au

Photos—If any parishioners have photos they have taken over the years, at various St Margaret's events, can they please send or give them to Mary at communications@stmargaretseltham.org.au

What's On

Lenten Studies Begin—Wednesday 17 February. See flier for more details.

Parish Ladies Fellowship—Tuesday 23 February at 2pm. Meeting at Barbara Talbots home, 11 Nokes Court Montmorency.

Piece of Peace Day—Wednesday 24 February. 9:30am—2:30pm. Special gathering. All Welcome. Contact Fay and Jenny.

Men's Breakfast— Saturday 5 March. Please see Harry for more details.

Parish Pub Lunch—Sunday 6 March. Please see Robyn Riley for more details.

ENJOYING YOUR LIFE OR SIMPLY

SURVIVING ? -The Rev'd Dr Sarah Bachelard, Anglican priest and writer, will explore the place of Joy in a world of pain in the Christian tradition. She will speak at St John's Anglican church, Camberwell. March 3, 7.30pm Details: See flier / Shirley Nash, Fay Gravenall for carpooling Supported by Discovering Spirituality at StMargarets.

Labour Day Long Weekend Anglican Camp and Conference 2016— Labour Day Weekend – Friday 11 March – Monday 14 March 2016. For people of all ages from Anglican parishes across Melbourne. More than just a few days out of town... it promises exciting activities, inspiring worship, and great opportunities for learning and discovery – or you can simply relax with friends. More details visit this web site <http://www.thelongweekend.org.au/>. Brochures are in the foyer. Parish Council will provide subsidies upon application. Talk to Clem or Kathleen.

Summer Fire Protocols

Should there be a code red day declared then worship services and any parish functions will be automatically cancelled, so personal fire plans can be activated. If there are any queries, please contact one of the wardens.

Hall Hire

Would all parishioners please remember that when the hall is hired out, we cannot use it or access the kitchen. We are very careful with bookings so that they do not overlap. There will be time to set up between hall bookings.

OHS Issue

We have been asked by the CFA not to put any items in front of the Fire Reel Door, in the foyer of the Church. This includes boxes, chairs, baskets and vases of flowers. If there is a fire, the fire reel needs to be easily accessible. Please ensure that we abide by this request as fines can be applicable. Thank you
Please ensure that the board holding the name tags is not left in front of the Fire Reel Door.